

# POWER PLANT

Simulation Conference

**JANUARY 26-28, 2015**

Omni Jacksonville Hotel; Jacksonville, FL



# *Table of Contents*

General Information	4
Welcome	5
Exhibitors Information	6-10
Fossil Agenda	11-14
Nuclear Agenda	15-20
Hotel Floor Plan	21
Exhibit Area Floor Plan	22
Nearby Restaurants	23-24
Things to Do in Jacksonville	25-26
Upcoming SCS Conferences Info	26-27

***Brought to you by :  
The Society for Modeling & Simulation International (SCS)***

*2015 Power Plant Sim*

# PROGRAM BOOK

Jan. 26-28, 2015  
Jacksonville, FL, USA

**Sponsored by SCS**

**General Chairs**

Jeff Mercer (Nuclear Track)

&

Tara Stuart and Erica Finley (Fossil Track)

# General Information

## **PPS 2015 Registration**

Ballroom Corridor

Sunday: 4:00 pm to 6:00 pm

Monday-Wednesday: 7:30 am to 5:00 pm

*On Thursday staff will be available for questions and information*

## **PPS 2015 Reception:**

Monday, January 26, 2015

Exhibit Area (Florida Salons CD)

6:00 pm to 9:00 pm

Sponsored by:



**MAPPS**

## **PPS 2015 Exhibit Area:**

Florida Salons CD

Monday-Tuesday: 7:30 am to 5:00 pm

Wednesday: 7:30 am to 1:00 pm

## **PPS 2015 Breakfasts & Breaks**

Exhibit Area (Florida Salons CD)

Coffee and Pastries: Mon-Wed 7:30 am to 8:30 am

AM Coffee Break: Mon-Thurs 10:00 am to 10:30 am

PM Coffee Break: Mon-Wed 3:00 pm to 3:30 pm

## **USUG Information:**

USUG Executive Session: Sunday, 5:00 pm to 6:00 pm (Jacksonville Room)

Annual Business Meeting USUG (members only): Thursday, 8:30 am to 12:00 pm (Florida Salons AB)

Other USUG Sessions & Regional Workshops (members only): Thursday, 1:30 pm to 3:00 pm (Tampa, Florida Salons AB, and Omni)

## **L3 MAPPS Information:**

(Pensacola Room)

L-3 MAPPS Owners Circle™ Conference - Day 1: Thursday, 3:00 pm– 6:00 pm

L-3 MAPPS Owners Circle™ Conference - Day 2: Friday, 9:00 am– 3:00 pm (lunch in Jacksonville Room)

\*Please note these events are to be attended by invitation only

# Welcome to PowerPlantSim'15

General Chairs:	Nuclear Track	Fossil Track
	Jeff Mercer	Tara Stuart & Erica Finley
	Southern Nuclear—Vogtle	Focused Training and Technical Services
	jwmercer@southernco.com	Tara@fttsolutions.com
		Erica@fttsolutions.com

We wish to express our warmest welcome to all participants and organizers of the tracks making up this 2015 Power Plant Simulation Conference (PowerPlantSim'15). All attendees are welcome to attend all of the sessions and activities unless otherwise noted in the agenda.

PowerPlantSim'15 offers a great forum for worldwide researchers and practitioners from Academia, Industry, Business, and Government to share their expertise, results and research findings relating to the Fossil and Nuclear energy community. This year's conference will be held at the Omni Jacksonville Hotel in Jacksonville, Florida.

We wish to thank the many individuals, whose dedicated effort contributed to the success of the event. Our sincere appreciation goes to all authors including those whose papers could not be accommodated in the program, and to all presenters.

*On behalf of the Society for Modeling and Simulation International, SCS,  
we hope you enjoy PowerPlantSim 2015 in Jacksonville, FL, USA!*



THE SOCIETY FOR  
**MODELING & SIMULATION**  
INTERNATIONAL

# *Exhibitors Information*

## **L-3 MAPPS**

When you are looking for increased reliability in your power plant's performance, you can count on L-3 MAPPS' simulation experience to get you there. Our dedication to true-to-life power plant simulators ensures that your personnel have the knowledge required to safely and efficiently operate your power plant.

### **DOING IT RIGHT**

Providing more than just training devices, our simulator solutions powered by L-3 MAPPS' unparalleled Orchid® suite of simulation products will elevate your engineering team to new heights in addressing plant design issues, procedural deficiencies and reliability improvements.

L-3 MAPPS simulators provide superior real-world power plant training. L-3 MAPPS offers a variety of products and services, including full scope simulators, classroom simulators, learning simulators, part-task trainers, simulator retrofits and upgrades and severe accident simulation. We provide design to completion turnkey systems, specific components, and simulator design tools as required by the customer. With a worldwide presence, a solid leadership position and the ability to provide any level of customer support through our Owners Circle™ program, L-3 MAPPS ensures the success of your simulator projects. Our simulators offer the highest quality in simulation fidelity and training to provide trainees and instructors with user-friendly tools for learning, controlling and exploring complex power plant systems.

### **USES AND ADVANTAGES**

Cost-effective training for

- Experienced operators and new recruits
- Overall plant and individual system operation and control
- Improving soft skills such as “command and control”, three-way communication, team interaction and performance in the most realistic simulator control room environment
- Emergency plan implementation and incident management
- Skilled response to equipment malfunction and plant transients
- I&C familiarization through DCS and plant process computer operation

More benefits

- Full visual implementation of whole plant simulation allowing users to have complete control over simulated plant design in an intuitive, easy-to-use manner
- State-of-the-art simulation environment for development, operation and management of your simulator with a fully visual, interactive graphic user interface including control room soft panels and plant system models
- Operations optimization with just-in-time training on plant start-up, shutdown and infrequently performed evolutions, etc.

# *Exhibitors Information*

## L-3 MAPPS (Cont.)

- Fewer unplanned outages due to operator error or equipment malfunction DCS and plant process computer verification and validation
- Improved plant safety
- Analysis of plant response to equipment and/or instrument failure
- Efficient plant design planning and testing
- DCS and plant process computer verification and validation
- Ease of simulator upgrade and ability to keep current with plant
- Multiple configurations on one simulator
- Portability of simulation for classroom training

**CONTACT:** Sean Bradley  
power.mapps@L-3com.com  
8565 Côte-de-Liesse  
Montréal, Québec  
Canada H4T 1G5  
www.L-3com.com/MAPPS  
LinkedIn: L-3 MAPPS  
Tel: 1-514-787-4999

---

## Westinghouse Electric Company

Westinghouse Electric Company is the only company with a single focus on nuclear power, providing a wide range of nuclear plant products and services to utilities throughout the world. Our employees worldwide provide fuel, spent fuel management, service and maintenance, instrumentation and control, and advanced nuclear plant designs. With the world's largest base of installed plants, no company has more nuclear experience.

With the combined resources of Westinghouse and Toshiba, an even broader range of products and services will be available to our customers, furthering our commitment to providing solutions that help achieve reduced outage times, reduced operation costs, and clean and efficient plant operations.

**CONTACT:** Shannon Farr  
farrsl@westinghouse.com  
1000 Westinghouse Drive  
Cranberry, PA 16066  
www.westinghousenuclear.com

# *Exhibitors Information*

## CORYS Thunder, Inc.

CORYS Thunder offers the most sophisticated products and technology in the simulation industry. CTI engineers pioneered Windows and PC based simulation technology as well as the THOR advanced thermal hydraulics and neutronics models. Most of the nuclear plant training simulators in the U.S., as well as several in Europe, rely on CORYS Thunder technology to meet critical training simulator fidelity, reliability, and training requirements.

**CONTACT:** Jody Ryan  
Jody.ryan@corysthunder.com  
1351 Tradeport Dr.  
Jacksonville, FL 32218  
www.corysthunder.com

---

## United Controls International

UNITED CONTROLS INTERNATIONAL (UCI) is a supplier to the Global Nuclear Industry. With over 40 years of experience, we specialize in:

- 3rd party Dedication and Qualification
- Panel Design, Fabrication, and Integration
- Obsolescence Solutions
- Field Services for plant and simulator panel modifications and upgrades

Our projects range from locating a hard to find obsolete part, to full scale simulator builds. Please consider UCI for your next project. You can find out more by visiting our website at [www.unitedcontrols.com](http://www.unitedcontrols.com)

**CONTACT:** Steve McElhanon  
smcelhanon@unitedcontrols.com  
205 Scientific Dr.  
Norcross, GA 30092  
www.unitedcontrols.com

---

## GSE Systems, Inc.

Since 1971 GSE Systems, Inc. has been solving the industry's needs for high-fidelity simulation and we continue to provide advances in engineering and visualization solutions. With the acquisition of Hyperspring LLC we not only provide the simulator, but also the training courses, instructors, and staff support to help you improve the performance of your plant and your people.

**CONTACT:** Deanne Bellin  
deanne.bellin@gses.com  
1332 Londontown Blvd.  
Sykesville, MD 21784  
www.gses.com



# *Exhibitors Information*

## Western Services Corporation

WSC, headquartered in Frederick, Maryland, is a global simulation company that was founded in 1995 and has been growing steadily based on the quality and efficiency of its products and its flexible team-oriented approach for serving customers.

WSC's primary focus is the development and deployment of advanced 3KEYSOFTWARE® Simulation Technology, which consists of the 3KEYMASTER™ simulation platform and a suite of unified graphical modeling tools, which includes 3KEYRELAP5-RT™, an adaptation of Idaho National Laboratory (INL) thermal-hydraulics and neutronics models running within the 3KEYMASTER Environment. WSC has its roots in the nuclear, fossil and combined cycle power plant operator training simulators and provides both new simulators and modernization or refurbishment of existing simulators. Even though operator training simulators are WSC's main focus, WSC has achieved significant growth in Simulation Assisted Engineering (SAE) based on the strength of its "engineering grade" simulation technology. Leading companies are now embedding WSC's technology in their engineering processes to address the challenges of improving quality up-front and reducing complex engineering development and commissioning cycles. To support the increasing deployment of e-learning, WSC has developed 3KEYSTUDENT™, which brings state-of-the-art simulator training to a student's PC anywhere in the world via the Internet. In response to the Fukushima event, WSC has embedded Severe Accident Analysis modeling in 3KEYMASTER by coupling MELCOR, a product of Sandia National Laboratories, with 3KEYRELAP5-RT.

WSC is committed to continually improving the capabilities of its technology and widening the applicability of its simulation technology to complex systems. To further this goal, WSC has a vigorous market-focused R&D program and a strong commitment to customer service. WSC is ready to serve you for your complete simulation needs.

**CONTACT:** Debbie Van de Poll  
deborah@ws-corp.com  
7196 Crestwood Blvd. #300  
Frederick, MD 21703  
www.ws-corp.com

---

## Tecnatom

Tecnatom was set up in 1957 as a Spanish engineering company specialising in guaranteeing the operation and maintenance of nuclear power plants to the highest levels of safety. The company's main activities centre on the rendering of component inspection and structural integrity services, the training of personnel in advanced training settings and the plant operating assistance engineering. Today, it is a business group with subsidiaries in USA, France, Brazil and China that carries out activities in several sectors, including energy, petrochemical, railways and aerospace.

The company supplies services and products with a high technological content, frequently designed and developed in-house, tailored to the needs and requirements of the different clients and markets and possessing state-of-the-art mechanical, electronic and data-processing design resources and programmes. Over 30 years of experience accumulated in simulation, operation support and human factors engineering has enabled Tecnatom to develop their own technology and methodology. These capabilities allow Tecnatom to provide the best solutions in training and simulation assisted engineering areas, in design and supply of new control rooms as well as in their modernization, leading I&C projects and designing and implementing new computerized operating support system.

# *Exhibitors Information*

## Tecnatom (Cont.)

Currently, the company participates in the design and supply of advanced control rooms and full scope simulators for 15 nuclear power plants in China, Taiwan, Argentina and Brazil, consolidating its presence as an international reference for the realisation of digital control room design and construction projects.

**CONTACT:** Manuel Fernandez Ordonez  
mfordonez@tecnatom.es  
Avda. Montes de Oca, 1  
Madrid, Spain 28703  
[www.tecnatom.es](http://www.tecnatom.es)

# Fossil Agenda

Monday, 26 January 2015

**Welcome and Introductions by Erica Finley (Focused Training and Technical Services)**  
**8:30 – 9:00** **Omni Ballroom**

**Session 1**  
**9:00 – 10:00** **Omni Ballroom**

- *Preparing the Instructor Station for Windows Touch* by Raymond Dimitri-Hakim (L-3 MAPPS)

10:00–10:30 COFFEE BREAK

**Session 2**  
**10:30 – 11:30** **Omni Ballroom**

- *Is It Perhaps Time to Redefine What a “Full-Scope” Operator Training Simulator Is?* by Keith Ehlers (SimGenics, LLC, Samahnzi-US, LLC)

**Session 3 \*\*Joint Session with Nuclear Track\*\***  
**11:30 – 12:00** **Florida Salons AB**

- *Next Generation Modeling and How You Get There* by Mike Fendley (GSE Systems)

12:00–13:30 LUNCH ON YOUR OWN

**Session 4**  
**13:30 – 14:00** **Omni Ballroom**

- *From Training Simulators to Learning Simulators* by Raymond Dimitri-Hakim (L-3 MAPPS)

**Session 5**  
**14:00 – 15:00** **Omni Ballroom**

- *Xcel Energy Plant King and Sherco Full Scope Simulators* by Joel Dixon (Western Services Corporation)

15:00–15:30 COFFEE BREAK

**Session 6**  
**15:30 – 16:30** **Omni Ballroom**

- *Enhancing Simulator Audio-Visual Capabilities* by Bernard Gagnon & Vincent Gagnon (L-3 MAPPS)

# Fossil Agenda

Tuesday, 27 January 2015

## **Session 7 \*\*Joint Session with Nuclear Track\*\***

**8:30 – 10:00**

**Florida Salons AB**

- 8:30–9:00: *How does ESKOM apply Virtual Training at their new 4,800MW Supercritical Power Plants?* By Kevin Brink (ESKOM) and Abrie Venter (Samahnzi-US, LLC)
- 9:00–9:30: *Research with a Room Full of Virtual Panels* by Kirk Fitzgerald (INL)
  - One Size Fits All – Research Simulator for Multiple Plants
  - The Simulator – a description of the simulator
  - Analog to Digital – the “how” of what we are doing
  - Modernization – “what” we are doing
- 9:30–10:00: *Enhancing Simulator Audio-Visual Capabilities* by Bernard Gagnon & Vincent Gagnon (L-3 MAPPS)

10:00–10:30 COFFEE BREAK

## **Session 8**

**10:30 – 12:00**

**Omni Ballroom**

- *Simulation of a Multi-Effect Desalination (MED) Plant* by Francois Laubscher (SimGenics, LLC, Samahnzi-US, LLC)

12:00–13:30 LUNCH ON YOUR OWN

## **Session 9**

**13:30 – 14:30**

**Omni Ballroom**

- *Unique Uses of Simulators* by Kevin Dahm (DTE Energy) and Kerry McLenon (DTE Energy)

## **Session 10**

**14:30 – 15:00**

**Omni Ballroom**

- *FAMOS: Applications for a Simulator* by Bob Holzworth (Scientech)

15:00–15:30 COFFEE BREAK

## **Session 11**

**15:30 – 16:30**

**Omni Ballroom**

- *Using Engineering-Grade Simulators as a Tool to Aid Design* by Dr. William A. Arnold (Babcock & Wilcox)

# Fossil Agenda

Wednesday, 28 January 2015

## **Session 12**

**8:30 – TBD**

**Omni Ballroom**

- *Users Only Session*—Fossil Simulator user attendees are encouraged to gather for networking and open discussion

# Notes

# Nuclear Agenda

Monday, 26 January 2015

**Welcome and Introductions by Jeff Mercer (Southern Nuclear—Vogtle)**  
**8:30 – 9:00 Florida Salons AB**

**Session 1: Engineering & Human Factors Simulation**  
**9:00 – 10:00 Florida Salons AB Chair: Jim Redwine (Columbia)**

- 9:00: *Deploying a Part-Task Trainer for St. Lucie Unit 1 Shutdown Cooling Operations* by Vincent Gagnon (L-3 MAPPS)
- 10:00: *The THOR 3-G Graphical Development Tool* by Dave O'Farrell (CORYS) & Dave Young (CORYS)

10:00–10:30 COFFEE BREAK

**Session 2: Next Generation Simulators**  
**10:30 – 12:00 Florida Salons AB Chair: Terry Damashek (Wolf Creek)**

- 10:30: *New Plants in Baraka (UAE)* by Majid Mirshah/Oussama Ashy (WSC)
- 11:00: *Preparing the Instructor Station for Windows Touch* by Raymond Dimitri-Hakim (L-3 MAPPS)
- 11:30: *Next Generation Modeling, and How You Get There* by Mike Fendley (GSE) \*\*JOINT WITH FOSSIL TRACK\*\*

12:00–13:30 LUNCH ON YOUR OWN

**Session 3: Virtual Simulation**  
**13:30 – 15:00 Florida Salons AB Chair: Mike Galle (Farley)**

- 13:30: *Robinson—Major DCS Upgrade Training Using Glass Top Simulator* by Mladen Udbinac (WSC)
- 14:00: *3D Virtual Training Concepts* by Scott Zepplin (GSE)
- 14:30: *From Training Simulators to Learning Simulators* by Raymond Dimitri-Hakim (L-3 MAPPS)

15:00–15:30 COFFEE BREAK

**Session 4: Fukushima Simulation Impacts**  
**15:30 – 17:00 Florida Salons AB Chair: Joe Yarbrough (Monticello)**

- 15:00: *Learnings from Fukushima on Severe Accident Phenomena* by Don Kalinich (Sandia National Labs)
- 15:30: *Fukushima Benchmarking Results/FLEX at Monticello* by Joe Yarbrough (Monticello) & Alex Broyles (Indian Point)
- 16:00: *Things to Know Before You Implement a Severe Accident Model* by Scott Zepplin (GSE)

# Nuclear Agenda

Tuesday, 27 January 2015

## **Session 5: \*\*Joint Session with Fossil Track\*\***

**8:30– 10:00**

**Florida Salons AB**

**Chair: Jeff Mercer (Southern Nuclear–Vogtle)**

- 8:30: *How Does ESKOM Apply Virtual Training at Their New 4,800MW Supercritical Power Plants?* by Kevin Brink (ESKOM) & Abrie Venter (Samahnzi)
- 9:00: *Research with a Room Full of Virtual Panels* by Kirk Fitzgerald (INL)
  - One Size Fits All – Research Simulator for Multiple Plants
  - The Simulator – a description of the simulator
  - Analog to Digital – the “how” of what we are doing
  - Modernization – “what” we are doing
- 9:30: *Enhancing Simulator Audio-Visual Capabilities* by Bernard Gagnon & Vincent Gagnon (L-3 MAPPS)

**10:00–10:30 COFFEE BREAK**

## **Session 6: Fukushima Simulation Impacts**

**10:30– 12:00**

**Florida Salons AB**

**Chair: Joe Yarbrough (Monticello)**

- 10:30: *How to Prepare for Your Electrical Models for Extended Blackout* by Scott Zeppelin (GSE)
- 11:00: *First Principles Flooding Models for Internal and External Flooding* by Laurent Leo (CORYS) & John Shriver (CORYS)
- 11:30: *Severe Accident Solution for Training and Emergency Preparedness* by George McCullough (GSE)

**12:00–13:30 LUNCH ON YOUR OWN**

## **Session 7: Recent Simulator Upgrades**

**13:30– 15:00**

**Florida Salons AB**

**Chair: Gary Degraw (River Bend)**

- 13:30: *Vogtle Simulator Upgrades (RM2300 & Open 6)* by Nakeya Crawford (Vogtle)
- 14:00: *Upgrading the Heysham 1 Simulator to Support Dual-Unit Operations* by Vincent Gagnon (L-3 MAPPS)
- 14:30: *Turbine Control Upgrade at Farley* by Mike Galle (Farley)

**15:00–15:30 COFFEE BREAK**

## **Session 8: International Simulator Upgrades**

**15:30– 17:00**

**Florida Salons AB**

**Chair: Jeff Mercer (Southern Nuclear–Vogtle)**

- 15:30: *Overcoming Challenges on the Daya Bay Simulator I/O System Replacement Project* by Gregory Zakaib (L-3 MAPPS)
- 16:00: *TPC Chin Shan GE BWR Simulator Upgrade* by Joel Dixon (WSC)
- 16:30: *Return of Experience of FSS Modernization in Slovakia* by Pascal Gain (CORYS)



# Nuclear Agenda

Wednesday, 28 January 2015

## **Session 9: Configuration Management**

**8:30 – 10:00**

**Florida Salons AB**

**Chair: Gerry Wyatt (Palo Verde)**

- 8:30: *Mochovce Unit 3&4 Full Scope Simulator Project Key Points and Successes* by Mike Fendley (GSE)
- 9:00: *Experiences with Configuration Management System & Functionality with ANS 3.5* by Dr. Burkhard Holl (KSG)
- 9:30: *Configuration Management at Plant Vogtle 1&2* by Nakeya Crawford (Vogtle)

10:00–10:30 COFFEE BREAK

## **Session 10: Simulator Testing**

**10:30 – 12:00**

**Florida Salons AB**

**Chair: Pablo Rey (Tecnatom)**

- 10:30: *Post Event Simulator Test Experiences at Tecnatom* by Pablo Rey (Tecnatom)
- 11:00: *Pre Validation Testing of Plant Modifications on the Simulator* by Don Dea (Cooper)
- 11:30: *Operators Training in Major Plant Modifications Implemented in Advance in FSS. Testing Program and Limits Identification* by Pedro Diaz (Tecnatom)

12:00–13:30 LUNCH ON YOUR OWN

## **Session 11: Regulations**

**13:30 – 15:00**

**Florida Salons AB Chair: Jeff Mercer (Southern Nuclear-Vogtle)**

- 13:30: *NRC Regulatory Perspective* by Scott Sloan & Larry Vick (NRC/NRR)
- 14:30: *ANS 3.5 Working Group* by Jim Florence (Nebraska Public Power District)

15:00–15:30 COFFEE BREAK

## **Session 12: Severe Accident**

**15:30 – 17:00**

**Florida Salons AB**

**Chair: John Signorelli (Waterford 3)**

- 15:30: *Full Integration of the MELCOR Severe Accident Models with Training Simulators* by Barney Panfil (CORYS)
- 16:00: *Applying MAAP5 for Real-Time Severe Accident Simulation* by Vincent Gagnon (L-3 MAPPS)

# *Nuclear Agenda*

Thursday, 29 January 2015

**Session 13: USUG Annual Business Meeting (USUG Members Only)**

**8:30 – 10:00**

**Florida Salons AB**

**Chair: Jeff Mercer (Southern Nuclear—Vogtle)**

10:00—10:30 COFFEE BREAK

**Session 14: USUG Annual Business Meeting (USUG Members Only)**

**10:30 – 12:00**

**Florida Salons AB**

**Chair: Jeff Mercer (Southern Nuclear—Vogtle)**

12:00—13:30 WORKING LUNCH

**Session 15: USUG Regional Workshops**

**13:30 – 15:00**

**Tampa, Florida Salons AB, Omni Ballroom**

**L-3 MAPPS Owners Circle™ Conference Day 1 (invitation only)**

**15:00 – 17:00**

**Pensacola**

**Chair: Michael Chatlani (L-3 MAPPS) and Bernhard Weiss (L-3 MAPPS)**

# *Nuclear Agenda*

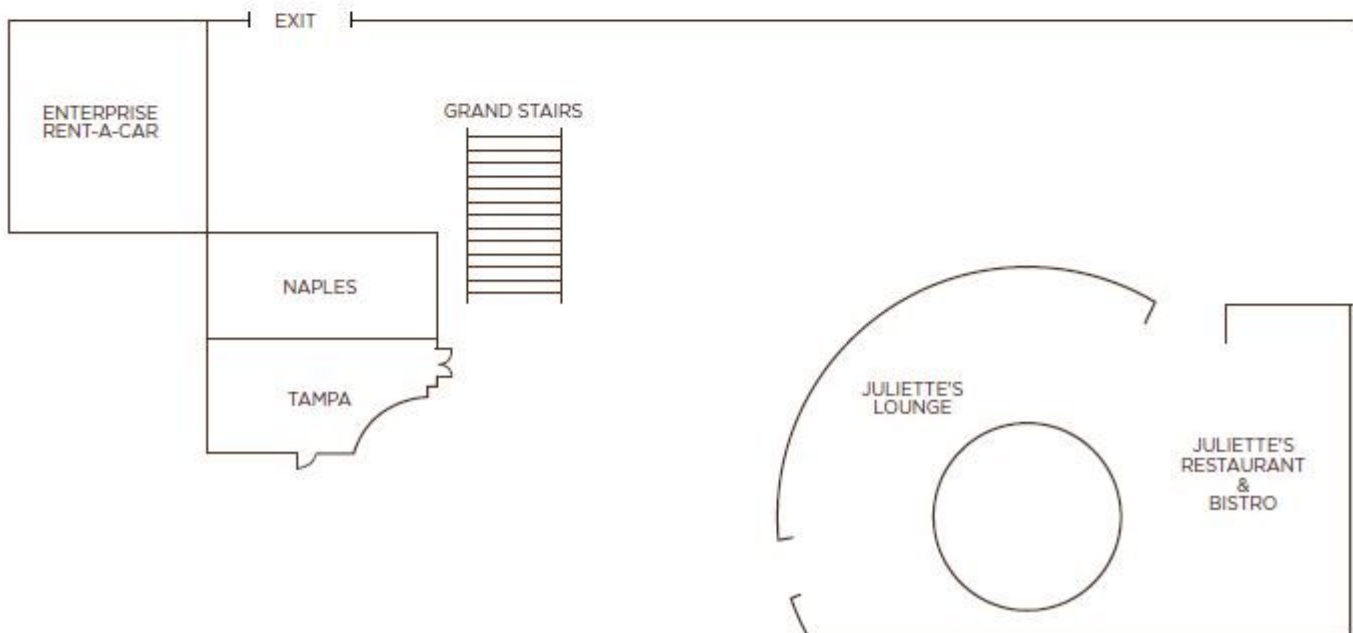
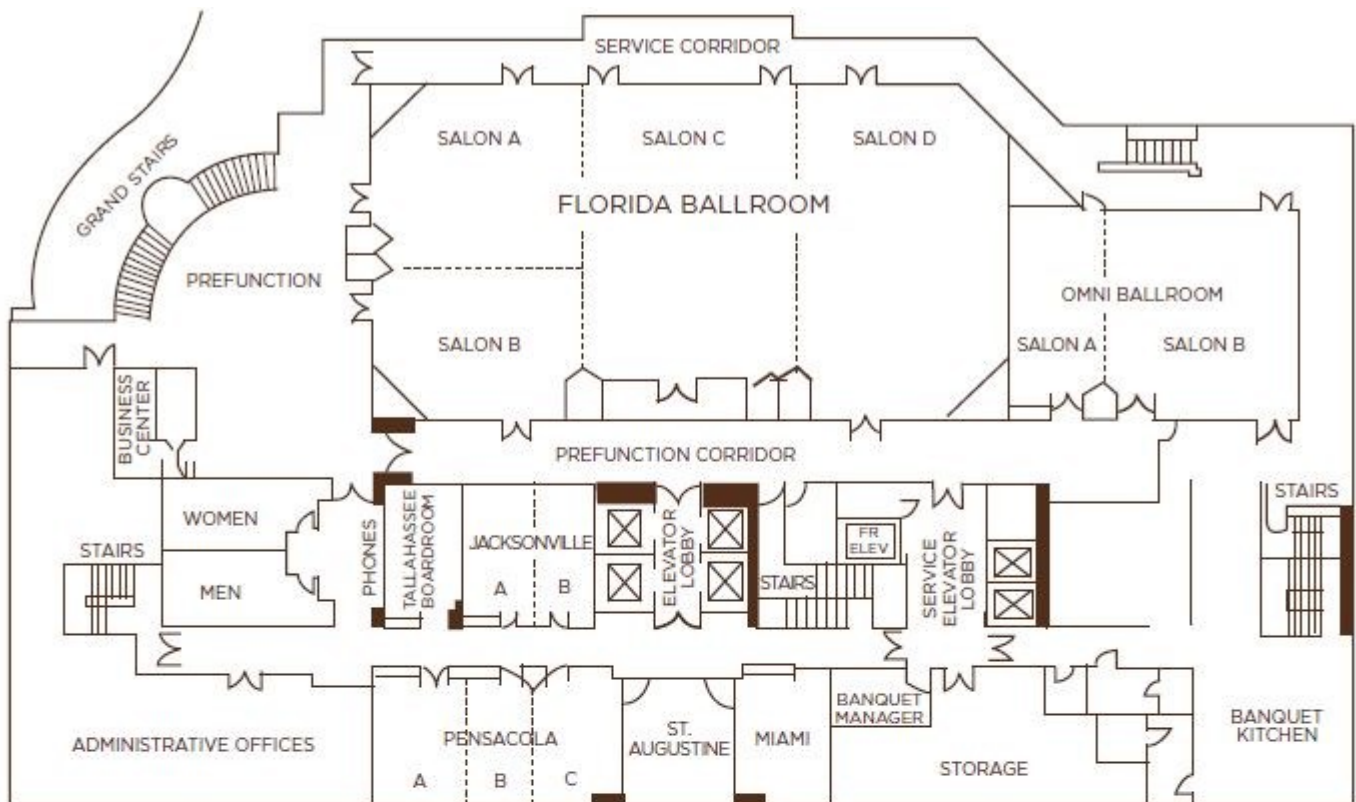
Friday, 30 January 2015

**L-3 MAPPS Owners Circle™ Conference Day 2 (invitation only)**

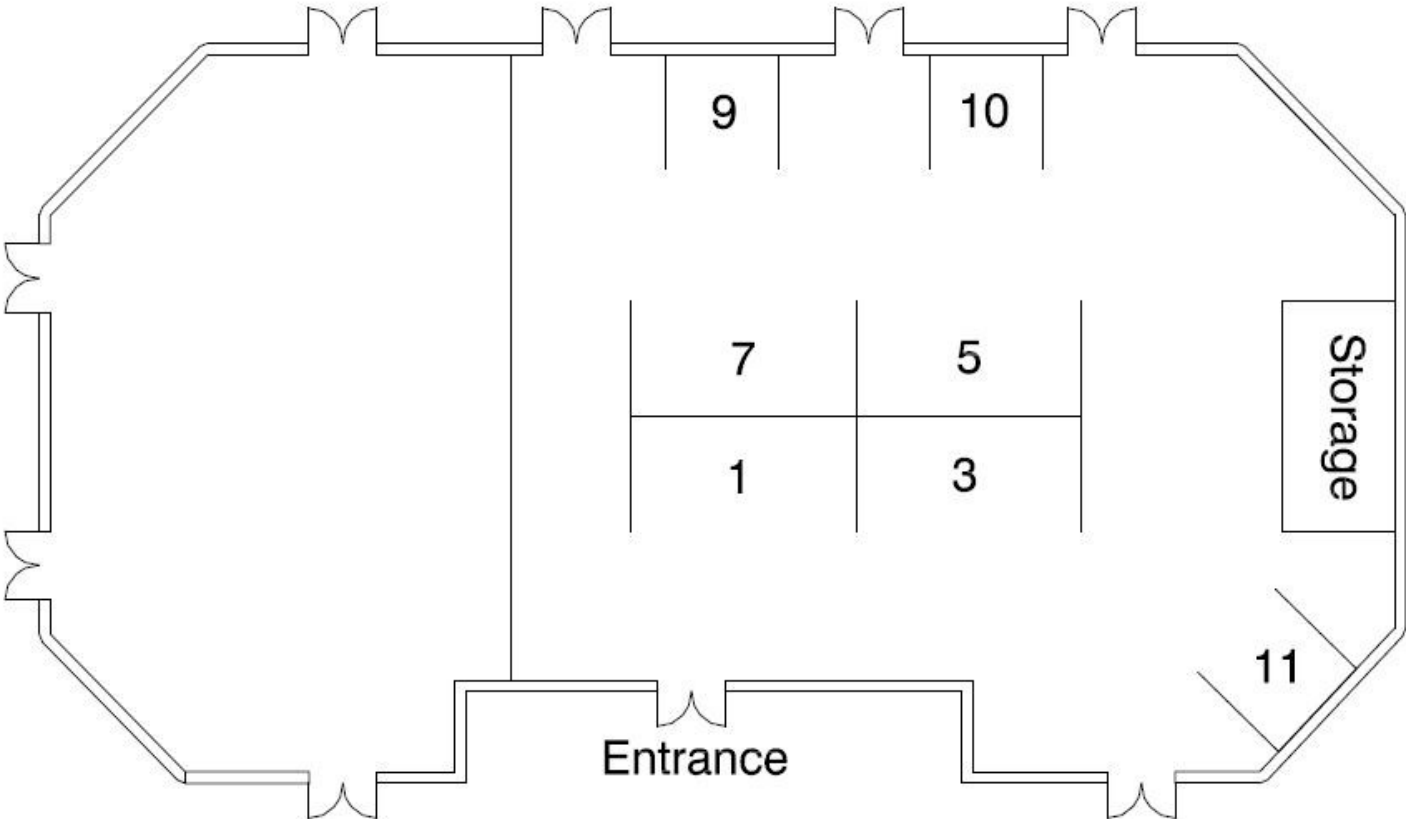
**8:30 – 15:30      Pensacola      Chair: Michael Chatlani (L-3 MAPPS) and Bernhard Weiss (L-3 MAPPS)**

# Notes

# Hotel Floor Plan



# Exhibitors Floor Plan



## Florida CD

- Booth 1 - L-3 MAPPS
- Booth 3 - GSE Systems
- Booth 5 - Western Services Corp
- Booth 7 - CORYS Thunder

- Booth 9 - Tecnatom
- Booth 10 - Westinghouse
- Booth 11 - United Controls International

## Salons

# Nearby Restaurants

## **American Grill**

At the Jacksonville Landing (adjacent to Omni Hotel)

Phone: 904-353-7522

Website: <http://www.jacksonvillelanding.com/dining-nightlife/american-grill/>

At the American Grill, we are dedicated to serving our finest creations in a casual, sophisticated atmosphere. Signature appetizers, pasta, pies and desserts make our menu tantalizing to the tastebuds. Our dishes are prepared from unique recipes gathered from across the country. Traditional cuisine is brought to life with an American flair, from wholesome pot pies and hearty pot roast to gourmet pizzas.

## **Benny's Steak and Seafood**

At the Jacksonville Landing (adjacent to Omni Hotel)

Phone: 904-301-1014

Website: <http://www.bennyssteakandseafood.com/>

Benny Yousefzadeh invites you to experience Benny's Steak & Seafood array of fine cuisine. The spectacular view of the St. John's river reflects a unique welcoming experience of fine gourmet dining in Northern Florida. We are the perfect place for that special occasion.

## **Burrito Gallery**

Address: 21 East Adams Street, Downtown Jacksonville (at The Landing)

Phone: 904-598-2922

Website: <http://www.burritogallery.com/>

Burrito Gallery is a delicious and unique restaurant located in the heart of downtown Jacksonville. Our menu includes Burritos, Tacos, Quesadillas, and Fresh Salads. Our food is prepared fresh daily and we're sensitive to Vegetarian and gluten free options. We feature local art and music. Check out our Urban Patio for outdoor Dining, Drinks, and Entertainment. - *Voted Best Burrito for the past 6 years by readers of Folio Weekly.*

## **Indochine**

Address: 21 East Adams Street, Downtown Jacksonville (at The Landing)

Phone: 904-598-5303

Website: <http://www.indochinejax.com/>

Thai and Southeast Asian cuisine.

# Nearby Restaurants

## **Chart House**

Address: 1501 Riverplace Blvd, Jacksonville

Phone: 904-398-3353

Website: <http://www.chart-house.com/locations/jacksonville/>

From our prime waterfront location, diners can spot dolphins swimming out front daily and catch the best views in town of all the boat parades and fireworks displays throughout the year. The St. John's River is the perfect backdrop for a romantic evening, afternoon lunch or stylish happy hour, all while sampling some of the most creative seafood dishes around.

## **BB's**

Address: 1019 Hendricks Ave, Jacksonville

Phone: 904-306-0100

Website: <http://www.bbsrestaurant.com/>

BB's restaurant and bar offers a mix of American continental cuisine with international influences including great salads, seafood, pizzas and sandwiches as well as daily specials of fresh caught fish, steaks, chops and pasta. Come enjoy our excellent food and atmosphere. Utilize our free wifi and don't forget to check in to foursquare for special deals.

## **River City Brewing Company**

Address: 835 Museum Circle, Jacksonville

Phone: 904-398-2299

Website: <http://www.rivercitybrew.com/>

River City Brewing Company is Jacksonville's premier riverfront restaurant located on the Southbank of downtown Jacksonville. The casually elegant 325 seat main dining room overlooks the beautiful St. John's River and the skyline of downtown Jacksonville. The menu offers dishes created with global flavor and culinary expertise including fresh seafood, tender steaks, creative pasta dishes and daily Chef's creations.



# *Things to Do in Jacksonville*

## **Jacksonville Landing**

2 W. Independent Dr, Jacksonville

904-353-1188

<http://www.jacksonvillelanding.com/>

Description: Nestled along the gorgeous St. Johns River in Downtown Jacksonville, The Jacksonville Landing is home to year-round entertainment, a wide variety of waterfront dining options and a cozy inside shopping mall all of which are sure to complete an afternoon or evening of fun.

## **Jacksonville Water Taxi**

Closest Pickup Location: Northbank Riverwalk at the Jacksonville Landing (adjacent to Omni Hotel)

904-630-2489

<http://downtownjacksonville.org/locations/I-152-jacksonville-water-taxi.aspx>

Hours of Operation:

Sunday-Thursday 11 a.m. to 9 p.m.

Friday-Saturday & Holidays- 11 a.m. to 11 p.m.

Round-trip tickets for adults are \$7 (see website for more fare info)

Water Taxi Stops:

1. Northbank Riverwalk at the Jacksonville Landing
2. Southbank Riverwalk at Friendship Fountain
3. Southbank Riverwalk at Wyndham Hotel

## **Southbank Riverwalk**

1001 Museum Circle, Jacksonville

Description: Bordering the St. Johns River, directly opposite Jacksonville Landing, this 1 1/4-mile wooden zigzag boardwalk is usually filled with joggers, tourists, folks sitting on benches, and lovers walking hand-in-hand, all of them watching the riverboats, the shorebirds, and downtown's skyline reflected in the water. It's a short water taxi ride away from the Omni.

## **San Marco Neighborhood**

Southbank, Jacksonville

<http://www.visitjacksonville.com/areas/san-marco/>

Description: Located just minutes away from Downtown's Southbank is the historic neighborhood of San Marco. Stroll along San Marco Square and you'll discover incredible dining, upscale trendy clothing boutiques, and sensational art galleries. The San Marco dinner theatre and Theatre Jacksonville, the oldest community theatre in the country dating back to 1938, are also located within the square.

# *Things to Do in Jacksonville*

## **Jacksonville Zoo and Gardens**

370 Zoo Pkwy, Jacksonville

904-757-4463

<http://jacksonvillezoo.org/>

Description: Escape to the Jacksonville Zoo and Gardens for the only walking safari in Northeast Florida. Discover the earth's wildlife through interactive and educational experiences. A true family adventure, the Jacksonville Zoo and Gardens is growing and changing daily and is dedicated to consistently improving. Beginning in 2004 with Range of the Jaguar and continuing with Giraffe Overlook and Savanna Blooms garden, the Jacksonville Zoo and Gardens is quickly becoming a world-class establishment. The Zoo has something for everyone with more than 2,000 rare and exotic animals and 1,000 varieties of plants. Whether you are a visitor to Florida's First Coast or a lifetime resident, we invite you to experience the Jacksonville Zoo and Gardens through interactions with people, wildlife and the environment.

## **Budweiser Brewery Tour**

111 Busch Drive, Jacksonville

904-696-8373

<http://www.budweisertours.com/z01/index.php/jacksonville/overview/>

Description: On our complimentary tour, discover how your favorite beer is crafted by following it through the steps of the brewing process. Since its founding in 1852 in St. Louis, Missouri, Anheuser-Busch has been perfecting this process, taking pride in producing some of the world's finest beers, one batch at a time. The complimentary tour is offered throughout the year at 11:00 am, 1:00 pm and 3:00 pm (closed Wednesdays).

## **Jacksonville Museum of Science and History**

1025 Museum Circle, Jacksonville

904-396-6674

[www.themosh.org](http://www.themosh.org)

Description: The Museum of Science and History (MOSH) inspires the joy of lifelong learning by bringing to life the sciences and regional history. Check out exhibits including: The Body Within, JEA PowerPlay: Understanding our Energy Choices, Florida Naturalist's Center, and more. Hours are Monday to Thursday: 10am-5pm, Friday: 10am-8pm, Saturday: 10am-6pm, and Sunday: 12pm-5pm. Admission is \$10 for adults, \$6 for children 3-12 years old.

# Upcoming SCS Conferences

## 2015 Spring Simulation Multi-conference (SpringSim'15)

April 12-15, 2015

Westin Alexandria; Alexandria, VA, USA

The Spring Simulation Multi-Conference 2015 (SpringSim'15) brings leading experts in various domains of Modeling and Simulation together. The Theory of Modeling and Simulation (TMS/DEVS 2015) will be a sub-conference of SpringSim.

The conference includes keynote speeches presented by technology and industry leaders, technical sessions, professional development courses and seminars, as well as vendor exhibits. Scientists, engineers, managers, educators, and business professionals who develop or use simulation tools are invited to participate and present original papers. Proposals are solicited for papers, panels, tutorials, workshops, seminars, exhibits, social activities and for other presentation, discussion and sponsorship formats. People are always welcome to benefit by taking an organizing role. SpringSim'15 offers many ways to promote simulation products and to enhance corporate images. You are invited to use the Spring Simulation Multi-conference in ways that best serve your interests.

SpringSim'15 symposia currently scheduled include (but are not limited to):

- Annual Simulation Symposium (ANSS)
- Symposium on Theory of Modeling and Simulation (TMS/DEVS)
- Agent-Directed Simulation (ADS)
- Communications and Networking Symposium (CNS)
- High Performance Computing Symposia (HPC)
- Symposium on Simulation for Architecture and Urban Design (SimAUD)
- Posters session, Student Colloquium, M&S Mobile App Competition

And many more!

Please visit [www.scs.org](http://www.scs.org) for key dates and deadlines, or call the SCS office at (858) 277-3888



THE SOCIETY FOR  
**MODELING & SIMULATION**  
INTERNATIONAL

# Upcoming SCS Conferences

## 2015 Summer Simulation Multi-conference (SummerSim'15)

July 26-29, 2015

Palmer House Hilton; Chicago, IL, USA

The Summer Simulation Conference 2015 (SummerSim'15) is SCS's premier international conference in cooperation with ACM SIGSIM. The conference focuses on modeling and simulation, tools, theory, methodologies and applications and provides a forum for the latest R&D results in academia and industry. We encourage you to take this opportunity to experience the tutorials, tracks, and workshops that will be available.

The conference includes keynote speeches presented by technology and industry leaders, technical sessions, professional development courses and seminars, as well as vendor exhibits. Scientists, engineers, managers, educators, and business professionals who develop or use simulation tools are invited to participate and present original papers. Proposals are solicited for papers, panels, tutorials, workshops, seminars, exhibits, social activities and for other presentation, discussion and sponsorship formats. People are always welcome to benefit by taking an organizing role. SummerSim'15 offers many ways to promote simulation products and to enhance corporate images. You are invited to use the Summer Simulation Multi-conference in ways that best serve your interests.

SummerSim'15 will include invited speakers, quality refereed papers, timely topical workshops, joint plenary sessions, consolidated registration, and access for registrants to all Multi-conference activities.

The following symposia are scheduled:

- International Symposium on Performance Evaluation of Computer and Telecommunication Systems 2015 (SPECTS'15)
- Summer Computer Simulation Conference 2015 (SCSC'15) - See website for a full list of sub-tracks in this symposium.

Please visit [www.scs.org](http://www.scs.org) for key dates and deadlines, or call the SCS office at (858) 277-3888



THE SOCIETY FOR  
**MODELING & SIMULATION**  
INTERNATIONAL

# Notes

# Notes

# Notes

# A WORLD OF THANKS



From developing our first power plant simulator in Canada in the 1970s to our current status as a global power plant simulation leader, L-3 MAPPS' success has been made possible by our esteemed customers and/or end-users who have always challenged us to be the best we can be. Thanks to your invaluable support over the years, we've been inspired to develop state-of-the-art solutions that push technological boundaries and meet your evolving requirements.

To see how our more than 40 years of expertise in advanced simulation can make a very real difference to you today and tomorrow, visit [L-3com.com/MAPPS](http://L-3com.com/MAPPS).