



THE SOCIETY FOR
MODELING & SIMULATION
INTERNATIONAL

PROUDLY PRESENTS

POWERPLANT**SIM**

Power Plant Simulation Conference 2013

Jan. 28 - Feb. 1, 2013

Renaissance Tampa International Plaza Hotel, Tampa, FL



Table of Contents

General Information	4
Welcome	5
Exhibitors Information	6-11
Upcoming SCS Conferences Info	12-13
PowerPlantSim'13 At A Glance Sessions	14-15
Fossil Agenda	16-18
Nuclear Agenda	19-23
Hotel Floor Plan	24
Exhibit Area Floor Plan	25
Nearby Restaurants	26-27
Things to Do in Tampa	28-29
Notes	30
PPS'13 Survey	31

2013 PowerPlantSim

PROGRAM BOOK

Jan. 28 - Feb. 1, 2013
Tampa, FL, USA

Sponsored by SCS

General Chairs

Bruce Kelly
&
Scott Cupp



Scan The QR Code To View Our Mobile App

General Information

PPS 2013 Registration

Sunday: 4:00 pm to 6:00 pm

Monday-Wednesday: 7:30 am to 5:00 pm

On Thursday staff will be available for questions and information

PPS 2013 Reception:

Monday, January 28, 2013

Costa Ballroom (Salon E-H)

6:00 pm to 9:00 pm

Sponsored by:



MAPPS

PPS 2013 Exhibit Area:

Costa Ballroom (Salon E-H)

Monday-Tuesday: 7:30 am to 5:00 pm

Wednesday: 7:30 am to 1:00 pm

PPS 2013 Breakfasts & Breaks

Costa Ballroom (Salon E-H)

Breakfast: Mon 7:30 am to 8:30 am

Coffee: Tues and Wed 7:30 am to 8:30 am

AM Coffee Break: Mon-Thurs 10:00 am to 10:30 am

PM Coffee Break: Mon-Wed 3:00 pm to 3:30 pm

USUG Information:

USUG Executive Session: Sunday, 5:00 pm to 6:00 pm (Marbella)

Annual Business Meeting USUG (members only): Thursday, 8:30 am to 10:00 am (Salon D)

Other USUG Sessions & Regional Workshops (members only): Thursday, 10:30 am to 3:00 pm (Salon D and Salon A, B, and C)

L3 MAPPS Information:

Salon F-G

L-3 MAPPS Owners Circle™ Conference - Day 1: Thursday, 3:00 pm– 6:00 pm

L-3 MAPPS Owners Circle™ Conference - Day 2: Friday, 9:00 am– 3:00 pm

*Please note these events are to be attended by invitation only

Welcome to PowerPlantSim'13

W
E
L
C
O
M
E

General Chairs: Bruce Kelly,
Sega Inc.
(913) 681-2881
bkelly@segainc.com

Scott Cupp
Entergy, Arkansas Nuclear One
(479) 858-6858
scupp@entergy.com

We wish to express our warmest welcome to all participants and organizers of the tracks making up this 2013 Power Plant Simulation Conference (PowerPlantSim'13). All attendees are welcome to attend all of the sessions and activities unless otherwise noted in the agenda.

PowerPlantSim'13 offers a great forum for worldwide researchers and practitioners from academia, industry, business, and government to share their expertise, results and research findings relating to the fossil and nuclear energy community. This year's conference will be held at the Renaissance Tampa International Plaza Hotel in Tampa, FL.

We wish to thank the many individuals, whose dedicated effort contributed to the success of the event. Our sincere appreciation goes to all authors including those whose papers could not be accommodated in the program, and to all presenters.

*On behalf of the Society for Modeling and Simulation International, SCS,
we invite all of you to join us at PowerPlantSim 2013 in Tampa, FL, USA.*



Exhibitors Information

L-3 Communications MAPPS Inc.

When you are looking for increased reliability in your power plant's performance, you can count on L-3 MAPPS' simulation experience to get you there. Our dedication to true-to-life power plant simulators ensures that your personnel have the knowledge required to safely and efficiently operate your power plant. Providing more than just training devices, our simulator solutions—powered by L-3 MAPPS' unparalleled Orchid® suite of simulation products—will elevate your engineering team to new heights in addressing plant design issues, procedural deficiencies, and reliability improvements.

L-3 MAPPS simulators provide superior real-world power plant training. L-3 MAPPS offers a variety of products and services, including full-scope simulators, part-task trainers, simulator retrofits, and upgrades. We provide design-to-completion turnkey systems, specific components, and simulator design tools as required by the customer. With a worldwide presence, a solid leadership position and the ability to provide any level of customer support, L-3 MAPPS ensures the success of your simulator projects. Our simulators offer the highest quality in simulation fidelity and training to provide trainees and instructors with user-friendly tools for learning, controlling, and exploring complex power plant systems.

FULL SCOPE POWER PLANT SIMULATORS

The superior training environments of L-3 MAPPS simulators provide clear advantages for obtaining operator certification, optimizing plant operating procedures and reducing costs. Operators trained on L-3 MAPPS simulator environments acquire the skills necessary to increase plant performance, minimize downtime, and provide confident emergency response. Simulator uses include interactive team training, severe incident management, plant design testing, and start-up/shutdown optimization.

L-3 MAPPS replica-quality hardware controls and touch-screen virtual panels create realistic and credible control environments. Real-time responses to operator actions and interactive instructor controls ensure maximum training effectiveness and adaptability. Any scenario, no matter how complex or dangerous in a real plant, can be reproduced, monitored, and varied in real time, providing a highly valuable tool for training and plant engineering.

Our commitment to customer support extends far beyond industry norms. L-3 MAPPS' unique knowledge transfer program allows customers to gain expertise and total confidence in the simulator. Users can directly implement simulator modifications to exactly reflect plant changes, evolve their training programs, and expand simulator use into other areas.

Exhibitors Information (Cont.)

SIMULATOR UPGRADES

Evolving training needs, greater fidelity expectations, changing standards, plant modifications, plant fuel updates, obsolescence, and plant life extensions are some of the realities the simulation industry now faces. To keep up, simulator owners need to take advantage of rapid advances in computing technology and implement cost-effective updates. L-3 MAPPS provides updates to legacy simulator platforms, including computer hardware, the instructor station, and/or the control room panel interface system. L-3 MAPPS upgrades take advantage of available computing power to improve the modeling fidelity of the reactor core, nuclear steam supply systems and all other plant systems.

EXPERIENCE

For more than 40 years, we have worked with our customers to create superior training systems and have established ourselves as the world's pre-eminent manufacturer of power plant simulators. L-3 MAPPS is a company of people with ideas and vision, with a desire to create value through innovation and with the experience to achieve success.

CONTACT : Michael Chatlani
power.mapps@L-3Com.com
8565 Côte-de-Liesse, Montréal
Québec, Canada, H4T 1G5
www.L-3com.com/MAPPS
TEL: 1-514-787-4999

Test and Measurement Instrumentation, LLC

TMI designs and manufactures high performance IO systems used predominantly in the Nuclear Power Simulation industry. We are the undisputed leader in simulation IO systems. We have upgraded 36 simulator IO systems worldwide. Our hardware is installed at nearly every nuclear simulator in the US. In addition to IO we offer many specialized hardware devices such as Synchroscope Controllers, Rod Step Counters, and Radiation Monitors to name a few.

CONTACT: Mike Colavito
tmi1@msn.com
1 Chestnut St. Ste. 4-K
Nashua, NH 03060

Exhibitors Information (Cont.)

GSE Systems, Inc.

We are a next-generation virtual simulation, simulation training, and engineering consulting services provider applying a world of experience to help you achieve the performance you imagine. GSE is a world leader in real-time, high-fidelity simulation, providing a wide range of simulation, training and engineering solutions to the energy industry. Our comprehensive and modular solutions help customers achieve performance excellence in design, training and operations. GSE's products and services are tailored to meet specific client requirements such as scope, budget and timeline

CONTACT: Deanne Bellin
deanne.bellin@gses.com
1332 Londontown Blvd.
Sykesville, MD 21784
www.gses.com

Studsvik

Studsvik software solutions and engineering services are used by nuclear power plants, fuel vendors, and safety authorities to calculate fuel and core configurations for optimum, reliable, and safe operation of nuclear power plants.

Studsvik offers a wide range of services to support nuclear fuel analysis efforts, such as independent core reload design and verification services. With over 25 years and thousands of operating cycles of experience in nuclear fuel analysis, Studsvik software remains the industry standard for light water reactor analysis. We have provided cycle design reviews, alternate core loading strategies, and fuel cycle optimization for customers in several countries.

Our team is made up of almost 50 engineers and software developers in offices throughout the world. We have a presence in the United States, Japan, Germany, Sweden, Norway, and Switzerland. Together, we speak over 10 languages, have analyzed reactors in more than 20 countries, and have 1,000 man years of experience.

This unique mix of diversity, talent, and experience has allowed us to analyze every commercially available light water reactor design and fuel design in the world over thousands of operating cycles. More than 200 of the 440 nuclear reactor units in the world have used Studsvik products and the Studsvik's core management software suite is used by almost 65% of the world's light water reactors.

Built with robust, first-principle physics modeling, advanced numerical techniques, and first-of-a-kind engineering features, Studsvik has created the most popular reactor analysis software in the world.

Exhibitors Information (Cont.)

Because of our internationally recognized expertise, Studsvik continues to provide important leadership for the commercial and non-commercial nuclear technology communities, and will play a central role in the next generation of nuclear power plants.

CONTACT: Jeffrey Judd
jeffrey.judd@studsvik.com
504 Shoup Avenue, Suite 201
Idaho Falls, ID 83402
TEL: (208) 522-1720
www.studsvikscandpower.com

Western Services Corporation

WSC, headquartered in Frederick, Maryland, is a global simulation and services company. It was founded in 1995 and has been growing steadily based on the quality and efficiency of its products and its flexible team-oriented approach for serving customers.

WSC's primary focus is the development and deployment of advanced 3KEYSOFTWARE® Simulation Technology, which consists of the 3KEYMASTER™ simulation platform and a suite of unified graphical modeling tools, which include 3KEYRELAP5-RT™, which is an adaptation of Idaho National Laboratory (INL) thermal-hydraulics and neutronics models running within the 3KEYMASTER Environment. Even though operator training simulators, both new simulators and the modernization or refurbishment of existing simulators for all type of power and process plants are WSC's main focus, WSC has achieved significant growth in Simulation Assisted Engineering (SAE), based on the strength of its "engineering grade" simulation technology. Leading companies are now embedding WSC's technology in their engineering processes to address the challenges of improving quality up-front, and reducing complex engineering development and commissioning cycles. To support the increasing deployment of e-learning, WSC has developed 3KEYSTUDENT™, which brings state-of-the-art simulator training to a student's PC anywhere in the world via the Internet. In response to the Fukushima event, WSC recently added the ability to embed Severe Accident Analysis modeling in 3KEYMASTER by coupling MELCOR, a product of Sandia National Laboratories, or EPRI's MAAP5, with 3KEYRELAP5-RT.

WSC is committed to continually improving the capabilities of its technology and widening the applicability of its simulation technology to complex systems. To further this goal, WSC has a vigorous market-focused R&D program and a strong commitment to customer service. WSC is ready to server you globally for your complete simulation needs.

CONTACT: Debbie Van de Poll
deborah@ws-corp.com
7196 Crestwood Blvd. #300
Frederick, MD 21703
www.ws-corp.com

Exhibitors Information (Cont.)

Westinghouse Electric Company

Westinghouse Electric Company is the only company with a single focus on nuclear power, providing a wide range of nuclear plant products and services to utilities throughout the world. Our more than 14,000 employees worldwide provide fuel, spent fuel management, service and maintenance, instrumentation and control, and advanced nuclear plant designs. With the world's largest base of installed plants, no company has more nuclear experience.

With the combined resources of Westinghouse and Toshiba, an even broader range of products and services will be available to our customers, furthering our commitment to providing solutions that help achieve reduced outage times, reduced operating costs, and clean, efficient plant operations.

CONTACT: Michelle Rossman
rossmams@westinghouse.com
1000 Westinghouse Dr.
Cranberry, PA 16066
www.westinghouse.com

Tecnatom, S.A.

TECNATOM was set up in 1957 as a Spanish engineering company specializing in guaranteeing the operation and maintenance of nuclear power plants to the highest levels of safety. The company's main activities center on the rendering of component inspection and structural integrity services, the training of operations personnel on full scope simulators and plant operating assistance engineering. Today, it is a business group with subsidiaries in Brazil, China and France that carries out activities in several sectors, including energy, petrochemical, railways and aerospace.

In addition to its centers in Spain, as part of its technology and market diversification strategy, in 2004 the company acquired the French non-destructive testing company Metalscan. It also undertook the leadership of a new French company M2M, created jointly with the companies Metalscan, Euraltech and CEA Valorisation (the French Atomic Energy Commissariat) for the development and delivery of ultrasonic phase-array inspection systems.

Concerning the Asian markets, in 2007 TECNATOM set up the company CITEC with the Chinese China Guandong Nuclear Power Company Research Institute (CNPRO, for the rendering of inspection services in the growing Chinese market. In addition, in 2011 TECNATOM established a representative office in Beijing to boost activities in the region.

Exhibitors Information (Cont.)

The company supplies services and products with a high technological content, frequently designed and developed in-house. adapted at all times to the needs and requirements of the different clients and markets, possessing state-of-the-art mechanical, electronic and data-processing design resources and programmes.

CONTACT: María Iglesias Alperi
miglesias@tecnatom.es
Avda. Montes de Oca, 1
28703 San Sebastián de los Reyes (Madrid)
www.tecnatom.es

Simulation Solutions, Inc.

Simulation Solutions is the leading company in developing PC based dynamic simulations and unique training methodology for use in training process technology operators.

CONTACT: Nancy McCarthy
nmccarthy@simulation-solutions.com
179 Ave at the Commons, Suite 1
Shrewsbury, NJ 07755 USA
www.simulation-solutions.com

CORYS Thunder, Inc.

CORYS Thunder, Inc. offers the most sophisticated products and technology in the simulation industry. CTI engineers pioneered Windows and PC based simulation technology as well as the THOR advanced thermal hydraulics and neutronics models. Most of the nuclear plant training simulators in the U.S., as well as several in Europe, rely on CORYS Thunder technology to meet critical training simulator fidelity, reliability, and training requirements.

CONTACT: Jody Ryan
Laurie.ryan@corysthunder.com
107 Industrial Drive
St. Marys, GA 31558
www.corysthunder.com

Upcoming SCS Conferences

2013 Spring Simulation Multi-conference (SpringSim'13)

April 7 - 10, 2013

Bahia Resort; San Diego, CA, USA

The Spring Simulation Multi-Conference 2013 (SpringSim'13) brings leading experts in various domains of Modeling and Simulation together. SpringSim'13 will be collocated with the Spring Simulation Interoperability Workshop (Spring SIW) 2013 organized and conducted by the Simulation Interoperability Standards Organization (SISO). It will also be collocated with the Conference on Theory of Modeling and Simulation (TMS/DEVS 2013).

The conference includes keynote speeches presented by technology and industry leaders, technical sessions, professional development courses and seminars, as well as vendor exhibits. Scientists, engineers, managers, educators, and business professionals who develop or use simulation tools are invited to participate and present original papers. Proposals are solicited for papers, panels, tutorials, workshops, seminars, exhibits, social activities and for other presentation, discussion and sponsorship formats. People are always welcome to benefit by taking an organizing role. SpringSim'13 offers many ways to promote simulation products and to enhance corporate images. You are invited to use the Spring Simulation Multiconference in ways that best serve your interests.

The following topic areas are scheduled:

- Agent programming and simulation modeling languages
- Service-oriented Computing and Simulation
- Cloud Computing
- Security of Mobile Devices
- Battlefield Visualization
- Whole System Simulation and Analysis
- Hybrid system modeling and integration of formalisms
- Formal analysis and symbolic reasoning
- Artificial Digital Societies
- Simulation of Clusters, Grids and Wireless System

Please visit www.scs.org for key dates and deadlines, or call the SCS office at (858) 277-3888

Upcoming SCS Conferences

2013 Summer Simulation Multi-conference (SummerSim'13)

July 7 - 10, 2013

The Fairmont Royal York, Toronto, ON, Canada

The 2013 Summer Simulation Multiconference (SummerSim'13) is an annual conference sponsored by The Society for Modeling and Simulation International which covers state-of-the-art developments in computer simulation technologies, as well as scientific, industrial, and business applications. Areas covered include high-performance computing technologies, models and algorithms, GUI visualization technologies, communications and much more. Application disciplines covered include advanced telecommunication; computer systems; military, government & aerospace; energy, and other industries.

The conference includes keynote speeches presented by technology and industry leaders, technical sessions, professional development courses and seminars, as well as vendor exhibits. Scientists, engineers, managers, educators, and business professionals who develop or use simulation tools are invited to participate and present original papers. Proposals are solicited for papers, panels, tutorials, workshops, seminars, exhibits, social activities and for other presentation, discussion and sponsorship formats. People are always welcome to benefit by taking an organizing role. SummerSim'13 offers many ways to promote simulation products and to enhance corporate images. You are invited to use the Summer Simulation Multiconference in ways that best serve your interests.

SummerSim'13 will include invited speakers, quality refereed papers, timely topical workshops, joint plenary sessions, consolidated registration, and access for registrants to all Multi-conference activities.

The following topic areas are scheduled:

- International Symposium on Performance Evaluation of Computer and Telecommunication Systems (SPECTS'13)
- Summer Computer Simulation Conference (SCSC'13)
- Grand Challenges in Modeling & Simulation (GCMS'13)

Please visit www.scs.org for key dates and deadlines, or call the SCS office at (858) 277-3888

PowerPlantSim'13 At A Glance Sessions

Sunday	27-Jan-2013
17:00 – 18:00	USUG Exec. Session
Monday	28-Jan-2013
08:30 – 08:45	Introductions
08:45 – 10:00	Session 1
10:00 – 10:30	Break
10:30 – 12:00	Session 2
12:00 – 13:30	Lunch
13:30 – 15:00	Session 3
15:00 – 15:30	Break
15:30 – 17:00	Session 4
Tuesday	29-Jan-2013
08:30 – 10:00	Session 5 (Joint Session)
10:00 – 10:30	Break
10:30 – 12:00	Session 6
12:00 – 13:30	Lunch
13:30 – 15:00	Session 7
15:00 – 15:30	Break
15:30 – 17:00	Session 8
17:00	Adjourn
17:00 – 18:00	
18:00 – 21:00	Reception

Fossil	Nuclear
Location	Location
Marbella	
Salon A-C	Salon D
Salon A-C	Salon D
Salon E-H (Exhibit Hall)	
Salon A-C	Salon D
On Your Own	
Salon A-C	Salon D
Salon E-H (Exhibit Hall)	
Salon A-C	Salon D
Salon A-D	
Salon E-H (Exhibit Hall)	
Salon A-C	Salon D
On Your Own	
Salon A-C	Salon D
Salon E-H (Exhibit Hall)	
Salon A-C	Salon D
Adjourn	
On Your Own	
Costa Ballroom - (Salon E-H)	

PowerPlantSim'13 At A Glance Sessions

Wednesday 30-Jan-2013

08:30 – 10:00 Session 9

10:00 – 10:30 Break

10:30 – 12:00 Session 10

12:00 – 13:30 Lunch

13:30 – 14:30 Session 11a

14:30 – 15:00 Session 11b

15:00 – 15:30 Break

15:30 – 17:00 Session 12

Thursday 31-Jan-2013

08:30 – 10:00 Session 13 (USUG)

10:00 – 10:30 Break

10:30 – 12:00 Session 14 (USUG)

12:00 – 13:30 Lunch (USUG)

13:30 – 15:00 Session 15 (USUG)

15:00 – 18:00 L-3 Owners Circle
(Invitation Only)

Friday 1-Feb-2013

09:00 – 15:00 L-3 Owners Circle
(Invitation Only)

Thank you for attending!

We hope to see you again next year.

Fossil	Nuclear
Location	Location
Salon A-C	Salon D
Salon E-H (Exhibit Hall)	
Salon A-C	Salon D
ADJOURN	On Your Own
	Salon D
	Salon D
	Salon E-H (Exhibit Hall)
	Salon D
	Salon D
	Salon E-H (Exhibit Hall)
	Salon D
	Salon E
	Salon A, B, C
	Salon F-G
Salon F-G	
Conference Ends	

Fossil Agenda

Monday, 28 January 2013

Session 1: Knowledge Transfer

8:45 – 10:00 Salon A-C Chair: Bruce Kelly (Sega)

- *Simulator Knowledge Retention - Road Map to Knowledge Transfer* by Bill Talbot, Ameren
- *Virtual Simulation is the Most Effective Path for Knowledge Transfer and Mastery* by Michael Lerg, GSE

Session 2: Training Simulator Projects (1)

10:30 – 12:00 Salon A-C Chair: Bruce Kelly (Sega)

- *High Fidelity Operator Training Simulator Implemented Ahead of the Plant Commissioning for a South American Utility* by Mike Cabaniss, GSE and Chad Butler, Emerson

Session 3: Training Simulator Projects (2)

13:30 – 15:00 Salon A-C Chair: Bruce Kelly (Sega)

- *Successful implementation of a circulating dry scrubber on a PC fired training simulator* by Kyle Greene, TRAX

Session 4: 77.20 Sessions

15:30 – 17:00 Salon A-C Chair: Bruce Kelly (Sega)

- *ISA/ANSI 77.20 Fossil Fuel Power Plants – Requirement Strategies Round Table* by Bruce Kelly, Sega
- *ISA/ANSI 77.20 Fossil Fuel Power Plants - Functional Requirements Committee Update* by Alex Lekich, GSE Systems

Fossil Agenda

Tuesday, 29 January 2013

Session 5: Joint Session with Nuclear

8:30 – 10:00 Salon A-D Chair: Rick Baker (Quad Cities)

- *Control of Virtual Simulation at Vogtle* by Jeff Mercer, Vogtle
- *Configuration Management of a 2nd Generation Virtual Simulator* by Bill Talbot, Ameren
- *Next Generation Simulators for a Next Generation* by Abrie Venter, Samahnzi

Session 6: Simulator Based Solutions

10:30 – 12:00 Salon A-C Chair: Tod Sneed (nHance)

- *Low Power Study Done Using the Roxboro Simulator* by Bob Lancaster, General Physics
- *Design Concepts of the Simulator for Ivanpah Solar Electric Generating Facility* by Shun Lam, Western Services Corporation

Session 7: Simulator Based Training

13:30 – 15:00 Salon A-C Chair: Bill Talbot (Ameren)

- *Web base simulation training and its benefit* by Bob Lancaster, General Physics
- *Classroom Simulator Advancements* by Joel Dixon, Western Services Corporation

Session 8: Workforce Development

15:30 – 17:00 Salon A-C Chair: Bruce Kelly (Sega)

- *Hands on Minds on Workshop* by Donald Glaser, Simulation Solutions

Fossil Agenda

Wednesday, 30 January 2013

Session 9: Users Only Session

8:30 – 10:00

Salon A-C

Chair: Bill Talbot (Ameren)

Session 10: Fossil Track 2014 Planning & Closing Remarks

10:30 – 12:00

Salon A-C

Chair: Bruce Kelly (Sega)

Nuclear Agenda

Monday, 28 January 2013

Session 1: I/O System Replacements

8:45 – 10:00 Salon D Chair: Jim Redwine (Columbia)

- *I/O System Replacement on the Diablo Canyon Simulator* by Raymond Dimitri-Hakim (L-3 MAPPS)
- *TESIS+ An I/O System for the Atucha II NPP Full Scope Simulator* by Julio Mendez (Tecnatom) and Maria Lopez (Tecnatom)
- *Corys CAN I/O – One Design, Multiple Form Factors* by Stan Chan (Corys)

Session 2: Severe Accident Simulation

10:30 – 12:00 Salon D Chair: Jody Brodsky (South Texas)

- *Implementation of Severe Accident Models at Monticello* by Tom Shortell (Monticello)
- *Integration of the THOR Models with the MELCOR Severe Accident Codes* by Barney Panfil (Corys)
- *TPC Chin Shan Relap Severe Accident Training Simulation* by Joel Dixon (Western)
- *Severe Accident Modeling: PSA-HD Simulation Implementation* by Steve Freel (GSE)

Session 3: International Simulator Upgrades

13:30 – 15:00 Salon D Chair: Mike Galle (Farley)

- *Lessons Learned from the Delivery of 8 Major Simulator Project Since 2000* by Kashmir Singh (EDF Energy)
- *Hartlepool Simulator: A UK Upgrade Project Similar to U.S. Simulator Upgrades* by Andrew Turland (EDF Energy) and Vincent Gagnon (L-3 MAPPS)
- *Atucha II Full Scope Simulator Delivery: How Project Major Challenges were Addressed* by Jose Antonio Esteban (Tecnatom), Pablo Rey (Tecnatom) and Diego Garde (Nucleoeléctrica Argentina)

Session 4: Virtual Environments

15:30 – 17:00 Salon D Chair: Gary Degraw (River Bend)

- *Virtual Reality For Complex Systems* by Susana Lopez (Tecnatom) and Pablo Rey (Tecnatom)
- *Virtual Simulation is the Most Effective Path for Knowledge Transfer and Mastery* by Mike Lerg (GSE)
- *Applications of Simulation Driven 3D Visualization* by Raymond Dimitri-Hakim (L-3 MAPPS)

Nuclear Agenda

Tuesday, 29 January 2013

Session 5: Combined Nuclear/Fossil - Control of Virtual Simulation Technologies

8:30 – 10:00 Salon A-D Chair: Rick Baker (Quad Cities)

- *Control of Virtual Simulation at Vogtle* by Jeff Mercer (Vogtle)
- *Configuration Management of a 2nd Generation Virtual Simulator* by Bill Talbot (Ameren)
- *Next Generation Simulators for a Next Generation* by Abrie Venter (Samahnzi)

Session 6: Engineering and Human Factors Simulation

10:30 – 12:00 Salon D Chair: Jian Tao Jiang (Bruce)

- *Modern Simulators – The Optimal Tool for Training, Safety Analysis and Design Verification* by Antanas Romas (GSE Power)
- *The B&W mPower™ SMR Full-Plant Simulator* by Bill Arnold (B&W)
- *NL Human Factors Simulator for Control Room Modernization* by Vincent Gagnon (L-3 MAPPS) and Ronald Boring (INL)

Session 7: Recent Simulator Projects

13:30 – 15:00 Salon D Chair: John Becerra (Diablo Canyon)

- *ANS 3.5 Compliant Glass Panel Simulator for Licensed Operator Training at EDF* by Pascal Gain (Corys)
- *Installation of a Digital Feedwater System in the Simulator Prior to the Plant* by Jeff Mercer (Vogtle)
- *RELAP5-HD Thermo Hydraulic Model Implementation Results* by Steve Freel (GSE)

Session 8: Fukushima Impacts

15:30 – 17:00 Salon D Chair: Rich Robenstein (IPEC)

- *Exelon Plan for Implementation of Severe Accident Simulation Models* by Gregg Ludlam (Exelon)
- *Development of a Virtual Plant Panel for Post Accident Containment H2 Monitoring* by Nathan Chamberlin (DC Cook)
- *In-House Development of a Fuel Pool Model at Comanche Peak* by Carlos Navas (Comanche Peak)

Nuclear Agenda

Wednesday, 30 January 2013

Session 9: Simulator Testing

8:30 – 10:00 Salon D Chair: Jim Florence (Cooper)

- *ANSI/ANS-3.5-2009 and PEST* by John Signorelli (Waterford 3)
- *Grand Gulf Extended Power Uprate* by Mike Bacon (Grand Gulf)
- *Simulator Repeatability in Modern Simulation Environments* by Dima Barkovsky (Western) and Mark Terry (Western)

Session 10: Simulator Management

10:30 – 12:00 Salon D Chair: Norman Good (TVA)

- *Fleet Coordination – Does It Work?* By Norman Good (TVA)
- *Implementation of a Configuration Management System that Allows Automatic Updates of Key Plant Setpoints & Instrument Configuration* by Tim Vriezema (DC Cook)
- *Implementation of a Web Based Configuration Management Application* by Gerald Wyatt (SONGS)

Session 11a: NRC Update

13:30 – 14:30 Salon D Chair: Scott Cupp (ANO)

- *NRC Regulatory Perspective* by Larry Vick, NRC/NRR

Session 11b: Material Testing Reactors

14:30 – 15:00 Salon D Chair: Scott Cupp (ANO)

- *Real Time Simulator for Japan Material Testing Reactor (JMTR)* by Thomas Carlsson (GSE Power)

Session 12: ANS-3.5 Working Group

15:30 – 17:00 Salon D Chair: Jim Florence (Cooper)

- *Introduce the ANS-3.5-201x Standard Working Group* by Jim Florence (Cooper)
- *Focus Areas for ANS-3.5-201x* by ANS-3.5 Working Group Members
- *Proposed Enhancements to the 201x Standard* by ANS-3.5 Working Group Members
- *ANS-3.5 Standards Transition Status* by Tim Dennis
- *Q&A with ANS-3.5 Working Group Members in Attendance*

Nuclear Agenda

Thursday, 31 January 2013

Session 13: USUG Annual Business Meeting (USUG Members Only)

8:30 – 10:00 Salon D Chair: Scott Cupp (ANO)

- Elections
- Regional Reports
- Recent Inspections
- Recent INPO ATV and E&As

Session 14: USUG Annual Business Meeting (USUG Members Only)

10:30 – 12:00 Salon D Chair: Scott Cupp (ANO)

- ANSI/ANS-3.5-2009 Implementation
- Severe Accident Models
- Training Needs Assessments

Session 15: Regional Workshops

13:30 – 15:00 Salon A, B, C

L-3 MAPPS Owners Circle™ Conference Day 1 (invitation only)

15:00 – 18:00 Salon F-G Chair: Michael Chatlani (L-3 MAPPS)

Nuclear Agenda

Friday, 1 February 2013

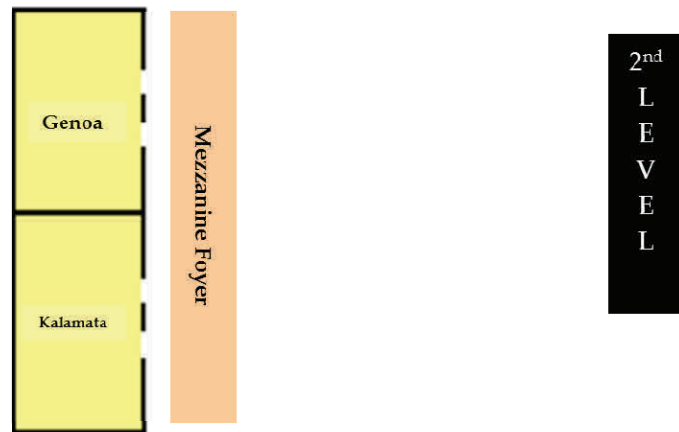
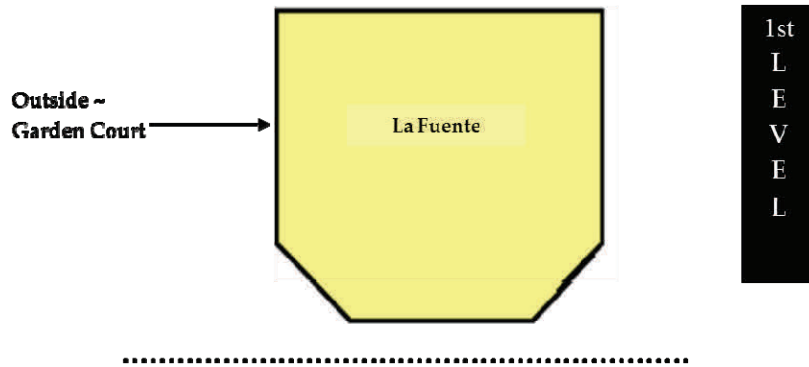
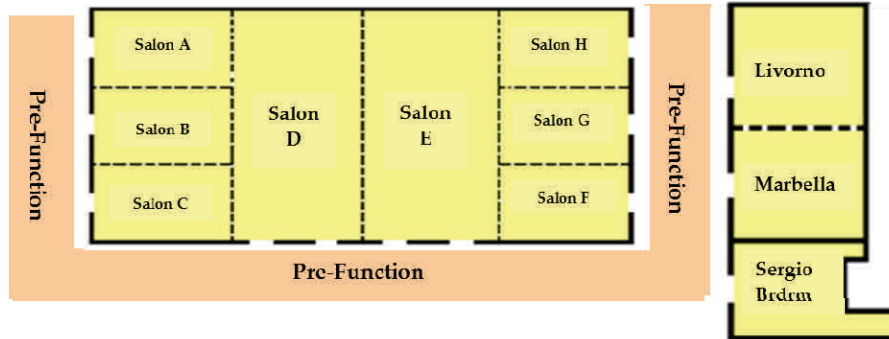
L-3 MAPPS Owners Circle™ Conference Day 2 (invitation only)

9:00 – 15:00

Salon F-G

Chair: Michael Chatlani (L-3 MAPPS)

Hotel Floor Plan



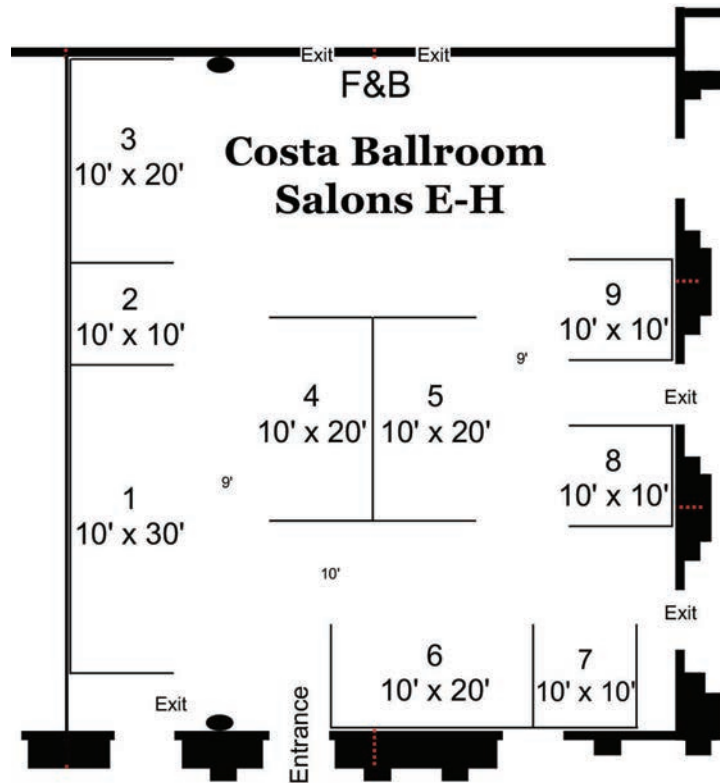
Renaissance Tampa International Plaza Hotel

(813) 877-9200

4200 Jim Walters Blvd

Tampa, Florida 33607 USA

Exhibit Area Floor Plan



Booth 1 - L3 MAPPS

Booth 6 - CORYS Thunder

Booth 2 - TMI LLC

Booth 7 - Westinghouse

Booth 3 - Tecnatom

Booth 8 - Studsvik

Booth 4 - Western Services Corp

Booth 9 - Simulation Solutions

Booth 5 - GSE Systems

**DON'T FORGET TO FILL OUT YOUR CONFERENCE
SURVEY (ON PAGE 31) AND RETURN IT TO THE
REGISTRATION DESK**

Nearby Restaurants

Capital Grille (The) - (Attached to Hotel) (ask for Michael Planas to book a group)

Phone: 813 830-9433

www.thecapitalgrille.com

Nationally acclaimed for dry aging steaks on premises, The Capital Grille also serves classic offerings like chops and North Atlantic lobsters. Guests enjoy an award-winning wine list with over 400 selections including prized older vintages. Gracious service and premier private dining are hallmarks.

Fleming's Prime Steakhouse & Wine Bar- Across the Street from the Hotel

Phone: 813 874-9463

www.flemingssteakhouse.com

Fleming's Prime Steakhouse & Wine Bar offers the best in steakhouse dining – prime meats and chops, fresh grilled fish and poultry, generous salads and side orders – featuring 100 fine wines by the glass. For a truly memorable evening for larger groups, a private dining room is available for 106 guests.

Roy's Hawaiian Fusion Restaurant- Across the Street from the Hotel

Phone: 813 873-7697

www.roysrestaurant.com

Hawaiian fusion cuisine made with the finest local ingredients, european sauces and bold Asian spices, with an emphasis on fresh fish and seafood. our menu features roy yamaguchi's signature dishes as well as culinary creations by our talented Tampa chefs.

Gallery Eclectic Bistro- Attached to Hotel

Phone: 813-353-3838

The "New American Cuisine" of the Gallery Bistro is both adventurous and innovative. It is the fusion of cooking styles and cuisines of the Southeast, utilizing fresh ingredients from this region, all combined to create dishes that are "full of flavor", exciting your palate and enhancing a unique dining experience.

Pelagia- Inside Hotel

Phone: 813-313-3235

www.pelagiatrattoria.com

Critically acclaimed PELAGIA Trattoria features modern Italian cuisine with a Chef Fabrizio Twist. One of the Top 20 new restaurants in Florida and one of the best restaurants in America as cited by Zagat, Pelagia is a place to see and be seen.

Nearby Restaurants

Ocean Prime – Across the Street from the Hotel

Phone: 813-490-5288

www.ocean-prime.com

The dishes, prepared with exquisite simplicity from the finest coastal and inland ingredients, are plated dramatically and artistically. The menu is predominantly seafood, featuring the finest and freshest prime fish available. To mark a special occasion, or to make dining an amazing experience anytime, Ocean Prime is always a deliciously elegant answer.

Brio Tuscan Grill - Attached to Hotel

Phone: (813) 541-7730

www.brioitalian.com

The food at BRIO is simply prepared using the finest and freshest ingredients, with an emphasis on high-quality steaks, house-made pasta specialties and flatbreads prepared in an authentic Italian wood-burning oven.

We serve our generous portions of meats, pastas and roasted fish on a large oval, hand-painted Italian plates. BRIO also caters to large groups. Our Tuscan Feast Menu with large pans of pasta, house specialties and bread is great for all your home and office celebrations or meetings.

Kona Grill – Across the Street from Hotel

Phone: (813) 877-5938

www.konagrill.com

Kona Grill offers diners freshly prepared food, personalized service & a warm contemporary ambiance that creates an exceptional, yet affordable dining experience. The diverse menu includes a wide variety of mainstream American dishes, as well as a variety of entrees & appetizers with an international influence. Specialties include Lemon Grass Crusted Halibut, Baked Sea Bass in a miso-sake marinade, Angus Steaks, Five-Spice Baby Back Ribs, Almond Crusted Pork Tenderloin, & Kona Grill's signature dish - Macadamia Nut Chicken. Kona Grill also features an award-winning sushi menu containing all of the traditional favorites plus several unique dishes created by talented sushi chefs.

Things to Do in Tampa

The Florida Aquarium

Phone: 813-273-4000

Website: www.flaquarium.org

Distance from Hotel- 5.5 miles- approx. 15-20 minute ride

Cost \$17.95

Explore the great outdoors - indoors in cool, air-conditioned comfort at The Florida Aquarium. Encounter over 30,000 aquatic plants and animals, from huge sharks to playful river otters. Enjoy daily behind-the-scenes tours, dive shows, close-up penguin encounters and two touch-tanks for hands-on experiences. Check out our brand new 2.2 acre outdoor discovery zone for kids, Explore A Shore. Children can enjoy Florida sunshine and climb aboard a 24-foot pirate ship, slide down a waterslide and more.

Salvador Dalí Museum

Phone: 727-823-3767

Website: www.salvadoralimuseum.org

Distance from Hotel: 20 miles approx. 30 minute ride

Cost \$15.00

The Salvador Dalí Museum is the permanent home of the world's most comprehensive collection of the renowned Spanish artist's work. Compiled by the A. Reynolds Morse and Eleanor Morse over a 45-year period, it is celebrated for its 96 oil paintings.

With oils spanning from 1917 through 1970, the collection provides an excellent overview of Dalí's major themes and symbols. Characterized by its diversity, it includes the Impressionist and Cubist styles of his early period, abstract work from his transition to Surrealism, the famous surrealist canvases for which he is best known, and examples of his preoccupation with religion and science during his classic period.

In addition to the 96 oil paintings, the collection includes over 100 watercolors and drawings, 1,300 graphics, photographs, sculptures and objects d'art, and an extensive archival library. Periodic rotations of the collection and special exhibitions allow museum goers to view new work on repeat visits.

Hyde Park Village Shopping

Phone: 813-251-3500

Website: www.hydeparkvillage.net

Distance from Hotel: 4 miles approx. 15 minute ride

Cost: No charge

A visit to Hyde Park Village turns any day into a special occasion. Shop in all your favorite boutiques, kick back with a casual lunch or kick up your heels for a festive night out. With great stores and unique restaurants, it's the perfect combination of shopping, dining and fun for all.

Things to Do in Tampa

Henry B. Plant Museum- National Historic Landmark

Phone: 813-254-1891

Website: www.plantmuseum.com

Distance from Hotel: 4.5 miles approx. 15 minute ride

Costs: Donations \$5.00

If you're railroad magnate Henry Bradley Plant, in the midst of the sand swamps that would be Tampa, you construct the most astonishingly magnificent hotel of its day, then fill it with treasures from around the world. With its splendid Moorish architecture, opulent furnishings, and spectacular tropical gardens, Plant's Tampa Bay Hotel attracted a host of celebrated guests, from Teddy Roosevelt to Sarah Bernhardt to Babe Ruth. A visit to the Henry B. Plant Museum and the authentically restored rooms of the Tampa Bay Hotel will transport you back to a time of indulgent ten-course meals, waltzing on the veranda and alligator hunting by moonlight....The journey is still worthwhile.

The Henry B. Plant Museum is housed in the 1891 Tampa Bay Hotel, now a National Historic Landmark and home to The University of Tampa. During the 1880's, Henry Bradley Plant was building an empire of railroads, steamships and hotels...

After the death of Henry Plant, the building was bought by the city of Tampa in 1904. It continued to operate as a hotel until 1932. In 1933, the Tampa Municipal Museum was established in order to preserve the legacy of the Tampa Bay Hotel becoming the Henry B. Plant Museum in 1974.

Today its mission is to interpret the Tampa Bay Hotel at the turn of the century and the Victorian lifestyles of America's Gilded Age for people of all ages, backgrounds, and levels of interest.

Big Cat Rescue

Phone: 813.920.4130

Website: www.bigcatrescue.org

Distance from Hotel: 8 miles approx. 15 minute ride

Cost \$25.00

This 45 acre, wildlife sanctuary is home to 140 cats representing 16 species of wild cat. All in one place you can see Lions, Tigers, Geoffroy Cats, Jungle Cats, Servals, Caracals, Snow Leopards, Bobcats, Lynx and more. Watch Tigers swimming in the lake or see them run full speed through their 3 acre cat-a-tat. Get so close to them that you can almost feel their hot breath on your skin. Take photos that everyone will think you took in the wild. Spend the afternoon with our Keepers walking the park to watch them hand out treats to Bearcats, Ocelots and Bobcats draped through the trees overhead. Trudge through the bush and spot Caracals, Servals and Jungle Cats in hot pursuit of lizards and birds.

Notes

PowerPlantSim'13 Survey

Please take a moment to fill out this survey and return to the registration desk, via email to scs@scs.org, or via mail to SCS at 2598 Fortune Way, Suite I, Vista, CA 92081. THANK YOU! Your feedback will help us to improve future Power Plant Simulation Conferences!

1. Which track did you attend? (circle) FOSSIL NUCLEAR BOTH
2. Which describes you best (circle) ATTENDEE EXHIBITOR OTHER
- (if other please explain) _____

3. How satisfied were you with the conference registration process? (circle)
- VERY SATISFIED SATISFIED DISSATISFIED VERY DISSATISFIED NOT SURE

4. How satisfied were you with the conference fees compared to other conferences? (circle)
- VERY SATISFIED SATISFIED DISSATISFIED VERY DISSATISFIED NOT SURE

5. How satisfied were you with the conference materials provided? (circle)
- VERY SATISFIED SATISFIED DISSATISFIED VERY DISSATISFIED NOT SURE

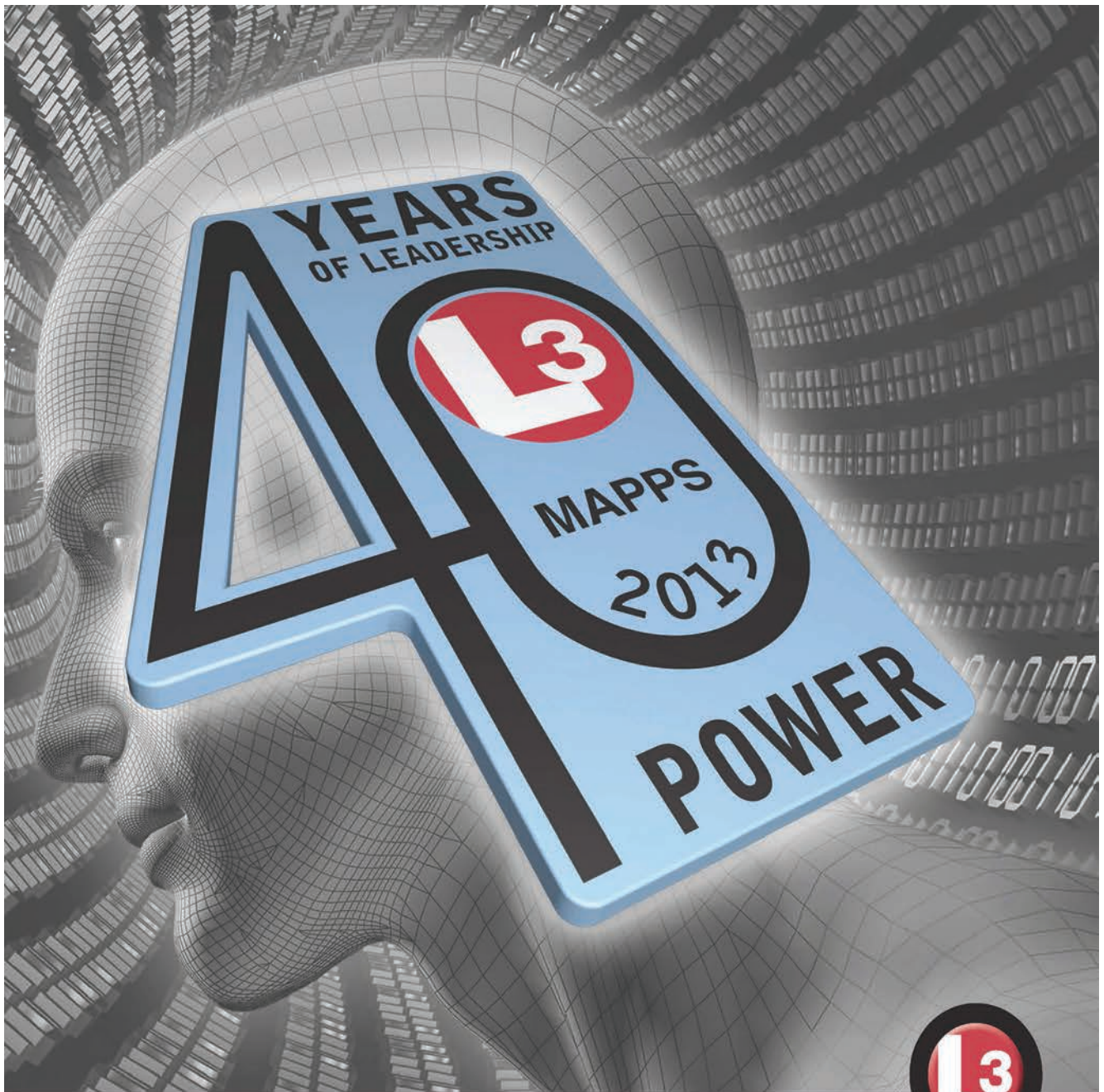
6. Overall, how satisfied were you with the speakers/presentations? (circle)
- VERY SATISFIED SATISFIED DISSATISFIED VERY DISSATISFIED NOT SURE

7. Overall, how satisfied were you with the conference location and facilities? (circle)
- VERY SATISFIED SATISFIED DISSATISFIED VERY DISSATISFIED NOT SURE

8. What did you like best/least from this year's conference? (please write in)
- _____
- _____
- _____

9. What would you like to see at future PowerPlantSim conferences? (locations, exhibitors, topics, etc)
- _____
- _____

10. What other conferences do you typically attend? (please write in)
- _____
- _____



From its beginnings as a Canadian upstart in 1973 to its current status as a global power plant simulation leader, L-3 MAPPS' success has above all been made possible by our esteemed customers and/or end-users who have always challenged us to be the best we can be. We thank each and every one of you for your support and for believing in us. With this support and inspiration, L-3 MAPPS has been empowered to push technological boundaries and to seek state-of-the-art solutions to meet your challenges and evolving needs.

To see how 40 years of expertise in advanced simulation can make a very real difference to you today and tomorrow, visit www.L-3com.com/MAPPS.